

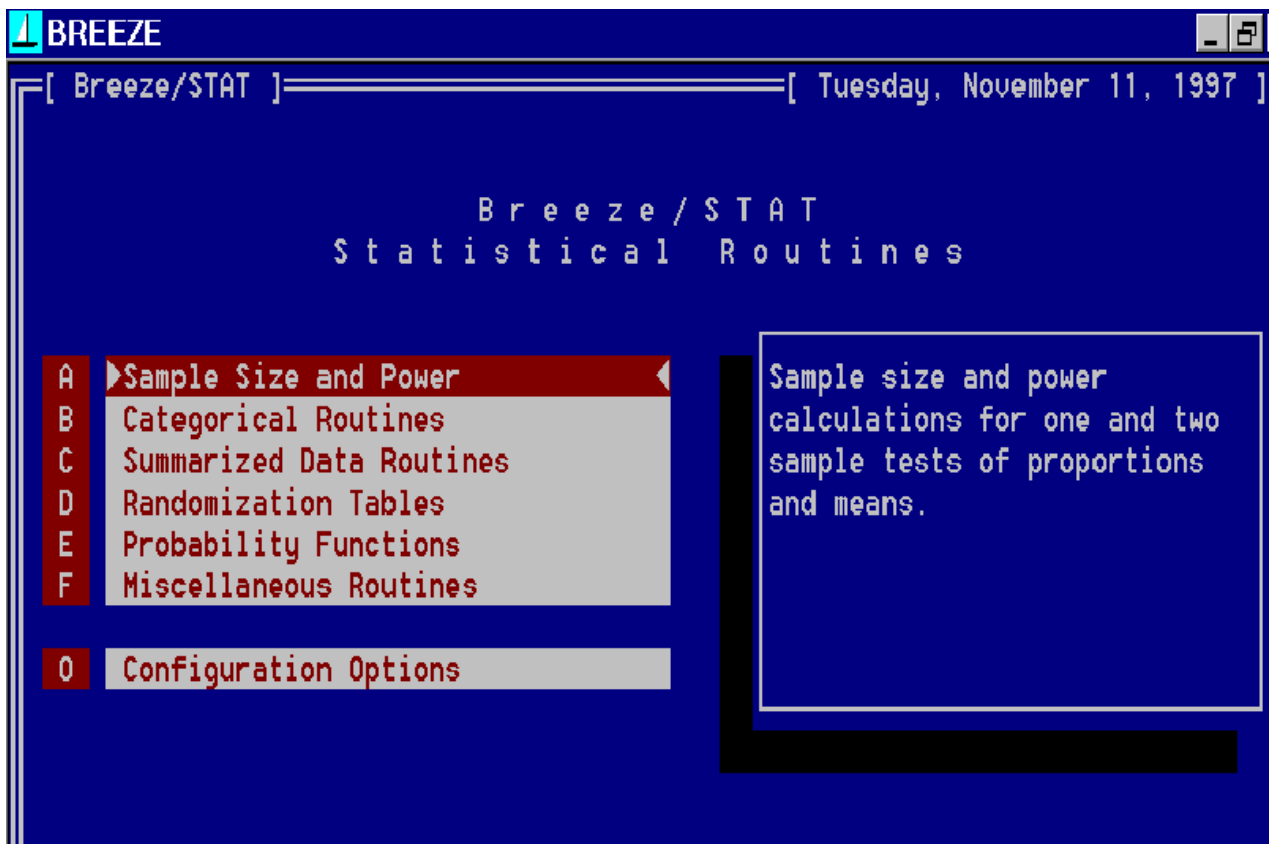
Breeze/STAT

Statistical Routines

Breeze/STAT includes statistical routines designed for analyzing summarized information, estimating sample size, creating randomization schedules and a library of statistical functions all with an easy to use interface.

Many of the routines in Breeze/STAT are not commonly found in larger, more expensive statistical software programs. Breeze/STAT is not meant to compete with the standard, larger statistical package; but to be an addition to the tools of a professional statistician and to those that use statistical techniques.

Main Menu Screen



Main A: Size & Power Menu

[Sample Size and Power]

Sample Size

- A ▶ One Sample Proportion Test
- B Two Sample Proportion Test
- C Precision for a Proportion
- D One Sample Mean Test
- E Two Sample Means Test
- F Precision for a Mean

Power

- G One Sample Proportion Test
- H Two Sample Proportion Test

Sample size for a one sample hypothesis test comparing a proportion to a given value.

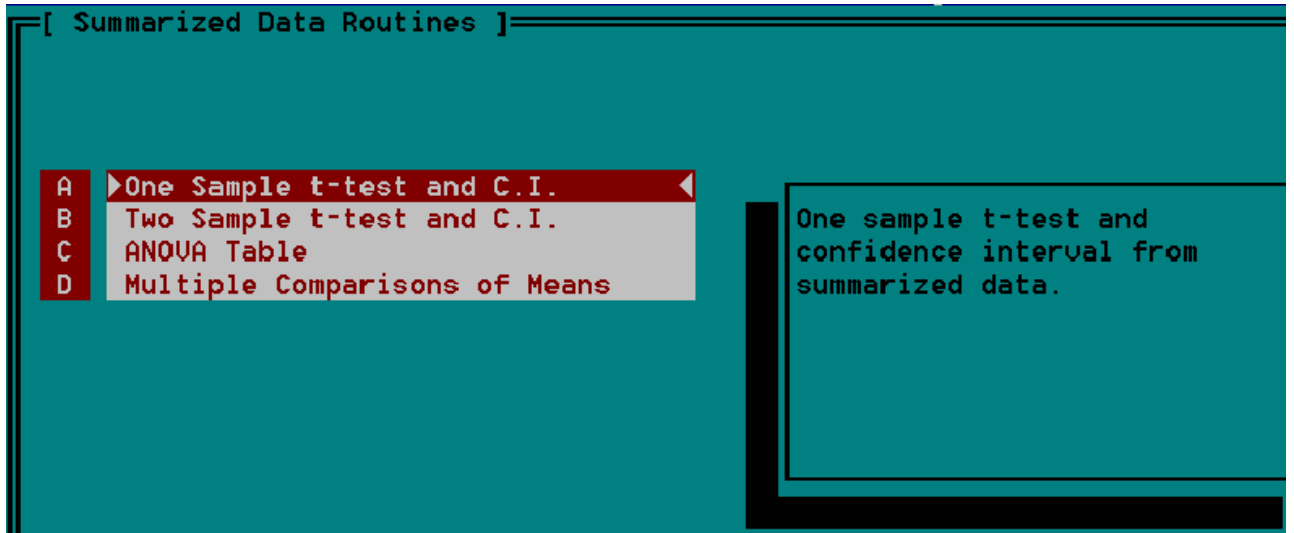
Main B: Categorical Menu

[Categorical Routines]

- A ▶ Contingency Tables
- B Binomial Test - One Sample
- C Sign Test
- D McNemar Test for Matched Pairs
- E Chi Square Goodness of Fit Test
- F Evaluation of a Screening Test

Analysis of 2 by 2 to 5 by 6 contingency tables.

Main C: Summarized Data Menu

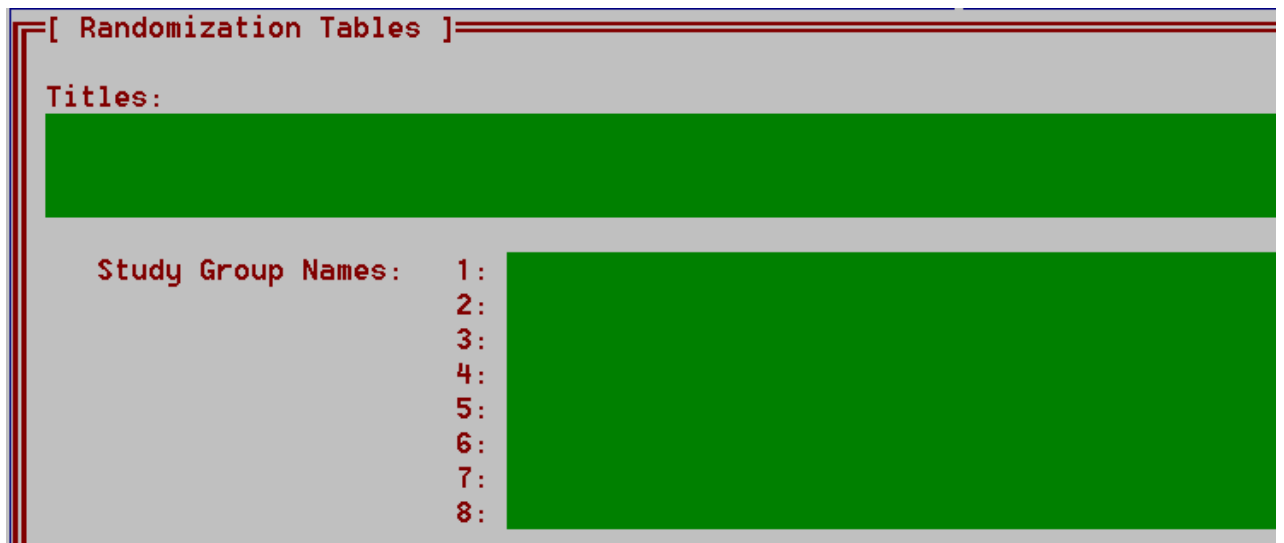


[Summarized Data Routines]

- A ▶ One Sample t-test and C.I. ◀
- B Two Sample t-test and C.I.
- C ANOVA Table
- D Multiple Comparisons of Means

One sample t-test and confidence interval from summarized data.

Main D: Randomization Menu



[Randomization Tables]

Titles:

Study Group Names: 1: 2: 3: 4: 5: 6: 7: 8:

Main E: Probability Menu

[Probability Functions]

Cumulative Probability Functions

- A ▶ Binomial Distribution
- B Poisson Distribution
- C Standard Normal Distribution
- D Chi Square Distribution
- E t Distribution
- F F Distribution
- G Non-central t Distribution

Inverse Functions

- H Standard Normal Distribution
- I t Distribution

Cumulative and Point Binomial distribution functions.

Main F: Miscellaneous Menu

[Miscellaneous Routines]

- A ▶ Descriptive Statistics
- B Linear Interpolation

Descriptive statistics for a single set of data.

Copyright Notice

Documentation and program copyright 1990 by GRG Associates. All rights reserved. Breeze/STAT program cannot be copied nor distributed except as a backup copy by the owner.

Program and Manual Notice

GRG Associates reserves the right to make changes to the Breeze/STAT User's manual and the Breeze/STAT program without notice. Breeze/STAT has been thoroughly tested and documented; however, GRG Associates does not take responsibility for the validity or interpretation of the values reported by this product. GRG Associates assumes no responsibility for, or liability for, errors contained in this manual or Breeze/STAT or for incidental, special, or consequential damages arising out of the use of this manual, or the use of this manual in performing computer calculations, or in connection with the performance of the computer equipment.

Installation Instructions

Breeze/STAT is very easy to install and use. The original software diskettes contain an automatic installation program: BZINSTAL.EXE.

This program dynamically creates the necessary directories on your computer and copies the Breeze/STAT system into these directories. The BZINSTAL program leads you through this installation with easy to understand instructions.

After installing Breeze/STAT, you can start the program by simply typing BZ at the DOS prompt and then pressing the ENTER key.

Before you begin installation, be sure to read the list of system requirements in Chapter One.

